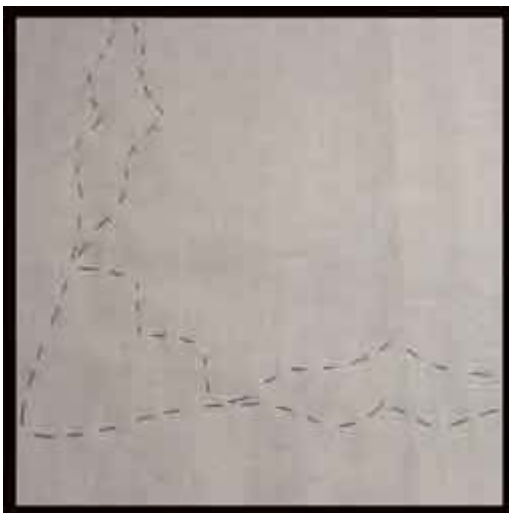
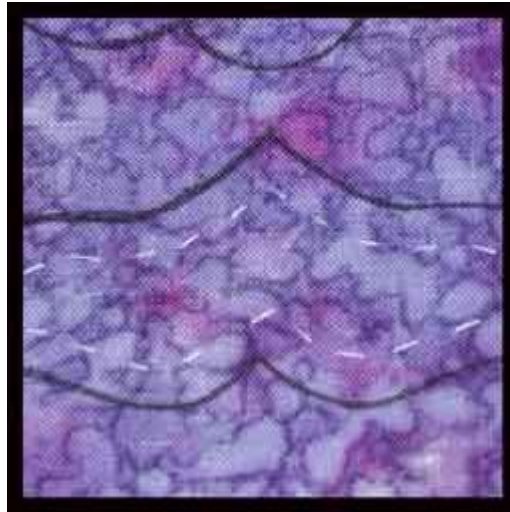




[Home](#) [Quilting Tips](#) [Contact Me](#) [Newsletter](#) [Patterns](#) [Links](#) [About Us](#) [Checkout](#)

A Pictorial Guide to Lining Applique Patches - continued

Step 3: Turn your work to the back side. Using white thread, baste the lining patch in place. Baste approximately 1/4" inside the drawn line.



Turn your work over. It will look similar to the photo at the left. Note: I have mixed white thread and black thread depending on which color showed the best in the photos. In actual practice, I always tack the lining in place with white thread so that the thread will not show through the light fabric.

Step 4: On the front side, trim away the excess white lining fabric, cutting approximately 1/8" outside your basting thread.

Note: As you have basted 1/4" inside the seam line and you have cut 1/8" outside the basted line, you have actually cut 1/8" inside the seam line. This will allow you to needle turn the seam allowance under the lining. As your seam allowance will be between 1/8" and 3/16", the entire area will be lined either with the lining fabric or the seam allowance which you have turned under. I don't like cutting any closer to the seam line as the lining may occasionally prevent me from turning the seam allowance as I choose.



[1](#) [2](#) [3](#) [4](#) [5](#)

<http://www.appleblossomquilts.com/>

Copyright © 2004 Connie Sue Haidle. All rights reserved.